

# House + Land

**P.J. BURNS**  
BUILDER



## Venus 197 - Dolphin Waters Estate - Burrum Heads (Lot 17 891m<sup>2</sup>)

Also may be compatible with other Lots. Plan may be flipped. Other facades are available. Subject to NCC2022

♥ House+ Land from \$764,000! 4 2 2

The Venus 197 has become an icon for PJ Burns Builder due to its value-for-money appeal and intelligent arrangement of spaces. This design has always provided new home buyers with the 'Australian Dream', and investors with an affordable, low maintenance and versatile opportunity.

This design is carefully considered by PJ Burns Builder for almost any type of family and is placed right with the premier lots of the lakefront in Dolphin Waters, Burrum Heads. This design is suited for most of the 15m+ width Lots in the Dolphin Waters Estate.

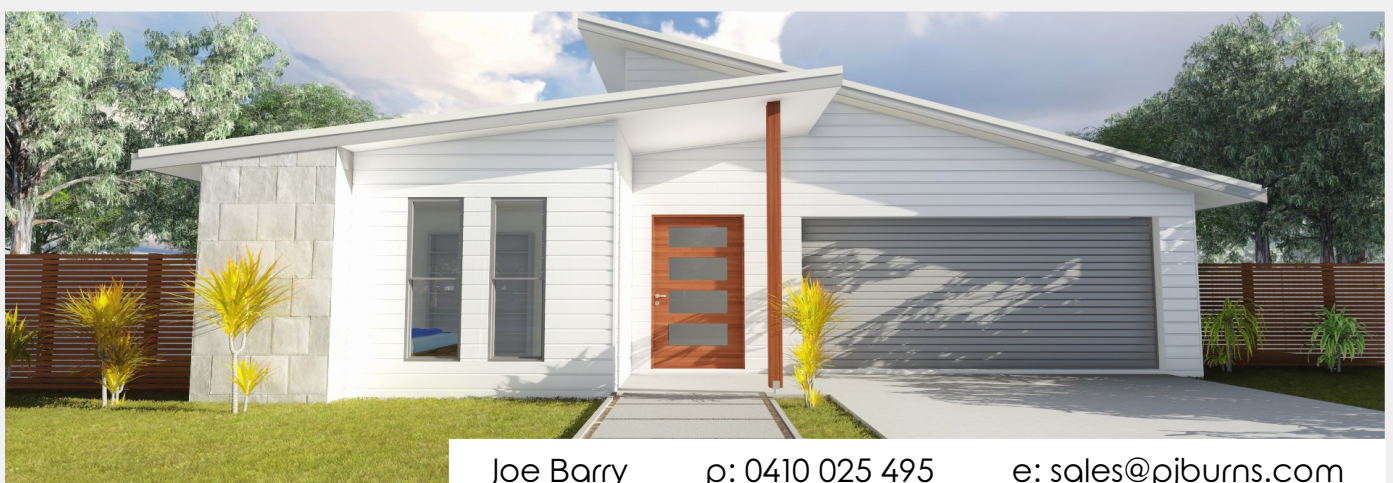
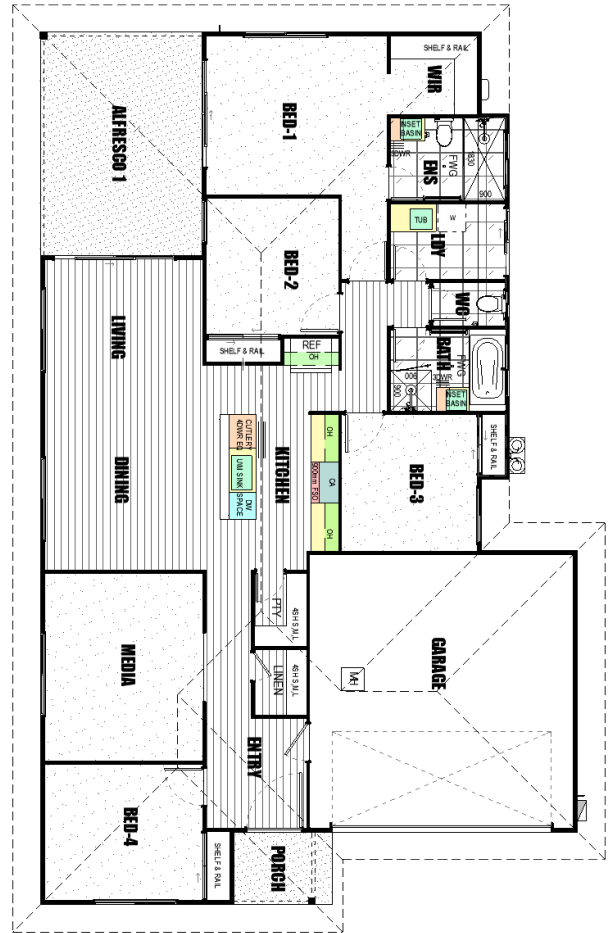
- ✓ A complete home with our quality standard specification.
- ✓ The outstanding construction quality of PJ Burns Builder.
- ✓ **Upgraded Façade Allowance.**
- ✓ Four Bedrooms, large Media Room, two Bathrooms, well-sized kitchen and living spaces with a large Alfresco
- ✓ Beautifully crafted products internally with a selection of Modernistic and stylish colours to choose from.
- ✓ **Lakefront Views !!!**

Build your home with PJ Burns Builder, a reputable local builder, celebrating 44 years in building this year!

For more information on this beautiful design, contact Joe today on 0410 025 495 or say hello ✉ sales@pjburns.com

Does this Lot or plan not suit you? Speak with us also about this design on other Lots.

Home+Land to be purchased separately.  
Conditions Apply, Pricing is subject to change without notice. Other facades are available.



Joe Barry

p: 0410 025 495

e: sales@pjburns.com