

House + Land

P.J. BURNS
BUILDER



Luna 193 - Dolphin Waters Estate - Burrum Heads (Lot 38 768m²)

Also may be compatible with other Lots. Plan may be flipped. Other facades are available. Subject to NCC2022

♥ **House+ Land from \$711,000!** 3 2 2

The Luna 193 is a thoughtfully designed narrow plan with an emphasis on keeping the details that make a home feel large. There is a spacious walk-through robe with a large ensuite, generous laundry and a flexible MPR that is well sized for any purpose.

This design is carefully considered by PJ Burns Builder for almost any type of family and is compatible with most Lots in the Dolphin Waters Estate Burrum Heads. This estate is in a fantastic, well kept neighbourhood in the quiet beach town of Burrum Heads only 25 minutes out of Hervey Bay QLD!

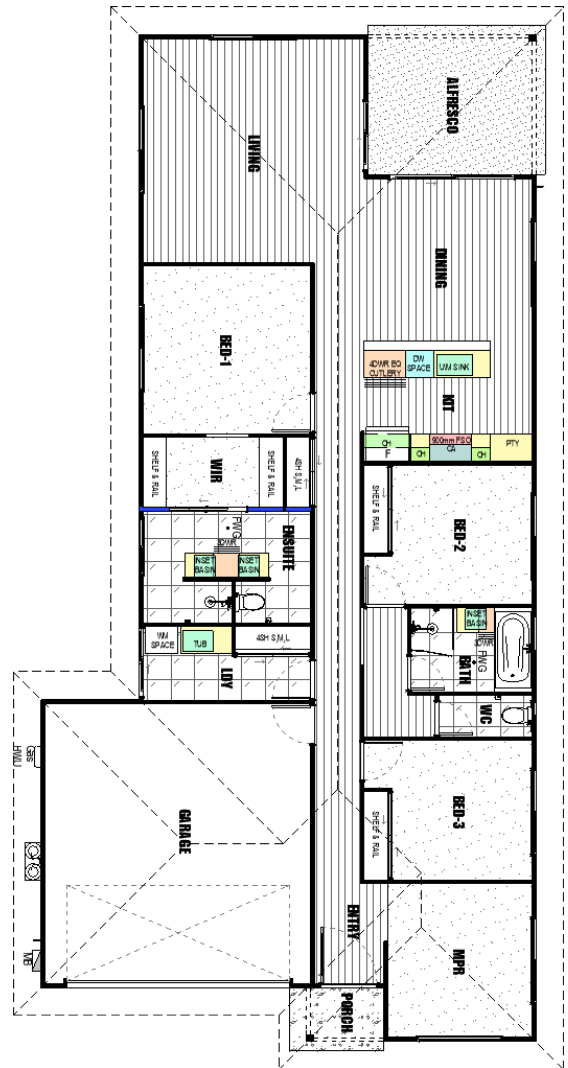
- ✓ A complete home with our quality standard specification.
- ✓ The outstanding construction quality of PJ Burns Builder.
- ✓ Upgraded Façade Allowance.
- ✓ Three Bedrooms, Multi Purpose Room (or 4th Bedroom), Large Master Suite.
- ✓ Beautifully crafted products internally with a selection of Modernistic and stylish colours to choose from.
- ✓ Modern Low Maintenance Materials, including James Hardies quality cladding systems.

Build your home with PJ Burns Builder, a reputable local builder, celebrating 44 years in building this year!

For more information on this beautiful design, contact Joe today on 0410 025 495 or say hello ✉ sales@pjburns.com

Does this Lot or plan not suit you? Speak with us also about this design on other Lots.

Home+Land to be purchased separately.
Conditions Apply, Pricing is subject to change without notice. Other facades are available.



Joe Barry

p: 0410 025 495

e: sales@pjburns.com